



# AGRICULTURE

## Lighting and Safety Selection



# AGRICULTURE

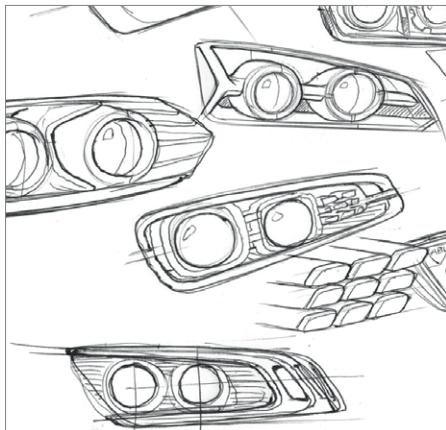
The agriculture activity seeks reliable and innovative products to be able to work, day and night, and feel completely safe. For more than 50 years, the core business of Vignal Lighting Group is the management of luminous flux for vehicles' lighting and signalling products. Vignal Lighting Group offers adapted solutions to the specific needs of farmers whose optimal visual comfort contributes to the enhancement of productivity.



## We are original equipment manufacturer

With more than a century of experience in lighting and signalling for commercial and industrial vehicles, Vignal Lighting Group is your partner of choice to light up your work.

Our engineers and project teams develop **innovative and customized products** specifically for top brand vehicles manufacturers and according to their specifications.

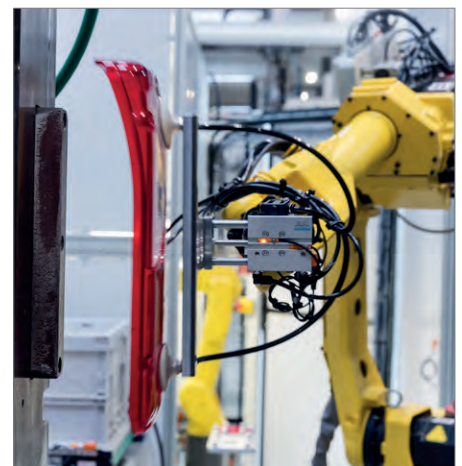


We test our developments and products in house to improve our time to market. These tests include electronics, photometry, night tests, watertightness, EMC, vibrations...

We offer a **qualitative and most advanced manufacturing tool** from the electronic circuit to plastic injection and product assembly.

This result in a wide range of reliable products suited to the agriculture market.

Our goal is to ensure a **safe and comfortable work environment** through all our lighting, signalling and safety solutions.



## Qualitative brands



## Vignal Lighting Group

Vignal Lighting Group is specialized in designing, manufacturing and marketing of lighting and signalling products and systems for industrial and commercial vehicles.

It is a result of the combination in 2014 of Vignal Systems and ABL Lights. Both companies gained over time an international recognition in their respective fields thanks to innovative and high-quality products.

In 2016, Vignal Lighting Group extends once again its product ranges with the acquisition of the company CEA SA based in Rancate, Switzerland, specialized in beacons and safety products for special vehicles especially in the agricultural field.

The R&D centers are located in France in the industrial areas of Lyon and Caen and in Rancate, Switzerland. The manufacturing factories are located in Europe, in France (Lyon, Caen) and Switzerland (Rancate), in USA, (Mosinee, WI) and In China (Changzhou).

### LIGHTING

page. 4



### BEACONS

page. 7



### SIGNALLING

page. 8



### SAFETY

page. 10





# 5 Functions

- High beam
- Low beam
- Position
- Direction indicator
- Repeater



**3800 LED**  
 12 - 24V  
 D14324 - A0831A673200 (left)  
 D14325 - A0831A673300 (right)

- Best performance EMC CISPR25 Class 3
- Highest reliability thanks to the latest LED technology
- Modern and robust design
- Patented de-icing technology (during operation)
- No fogging
- Rear or pedestal fixation

PLUG AND PLAY WITH HALOGEN VERSION



**3800 H4**  
 12V  
 D14320 - A0830A673600 (left)  
 D14321 - A0830A673700 (right)

OE Original Parts



**RL 1000 LED**  
 • CEM CISPR25 class 5  
 • All types of light patterns  
 • IP69K  
 1000 effective lm | 12 - 24V  
 P/N on demand



**RT 1500 LED**  
 • CEM CISPR25 class 5  
 • All types of light patterns  
 • IP69K  
 1500 effective lm | 12 - 24V  
 P/N on demand



**RLA 2000 LED**  
 • CEM CISPR25 class 5  
 • All types of light patterns  
 • IP69K  
 2000 effective lm | 12 - 24V  
 P/N on demand



**RHD 3000 LED**  
 • CEM CISPR25 class 3  
 • All types of light patterns  
 • IP69K  
 3000 effective lm | 12 - 100V  
 P/N on demand



**SL 1000 LED**  
 • CEM CISPR25 class 5  
 • All types of light patterns  
 • IP69K  
 1000 effective lm | 12 - 24V  
 P/N on demand



**ST 1500 LED**  
 • CEM CISPR25 class 5  
 • All types of light patterns  
 • IP69K  
 1500 effective lm | 12 - 24V  
 P/N on demand



**SLA 2000 LED**  
 • CEM CISPR25 class 5  
 • All types of light patterns  
 • IP69K  
 2000 effective lm | 12 - 24V  
 P/N on demand



**SHD 3000 LED**  
 • CEM CISPR25 class 3  
 • All types of light patterns  
 • IP69K  
 3000 effective lm | 12 - 100V  
 P/N on demand

Other variants on request.



**QL 2000 LED**

- Perfect for small spaces
- Universal application
- From flood to long range patterns

2000 effective lm | 12 - 24V

P/N on demand



**POLAR LB 12XD LED**

- Powerful and bright light
- Double shaped free form catadioptr
- Long range light pattern

12000 raw lm | 10 - 30V

P/N on demand



**Blue lights : ideal for sprayers**



**Carbonlux 2963**

- Thin design perfect for small spaces
- Light carbon housing
- Full IP 69K protected

1000 raw lm | 10 - 30V

29.63.L0A.C00 - D14553



**SL 1000 LED**

- Robust aluminium heat sink and plastic insert
- Full IP 69K protected

1000 effective lm | 12 - 24V

P/N on demand



**Carbonlux**

- Carbon compound housing
- Reduced weight
- No maintenance - rust free
- IP 69K
- Double optics diffused and spot light
- Switch and handle available on demand
- Adjustable sideways fixation bracket



**Carbonlux 2964**

- Oval shape perfect for agriculture applications
- Wide flood light pattern

---

1000 effective lm | 10 - 30V

---

29.64.LD0.C00 (cable)  
29.64.LD0.CD0 (DT)



**Carbonlux 2961**

- Double optics light pattern

---

1000 effective lm | 10 - 30V

---

29.61.L00.C00 (cable)  
29.61.L00.CD0 (DT)



**Carbonlux 2960**

- Magnetic rubber suction cup anti scratch
- 3,5 m spiral cable

---

1365 effective lm | 10 - 30V

---

29.60.LV0.CD0 (DT)



**Carbonlux 2963**

- Versatile use with flexible pole mounting ISO 4148/4165
- Practical with handle and switch

---

960 effective lm | 10 - 30V

---

29.63.L7M.C00 (cable)

**NEW**



**Carbonlux RC 850 LED**

- Very compact
- Clear and uniform light diffused
- Pedestal, suspended or flush mount

---

850 effective lm | 10 - 30V

---

29.32.L00.000 (cable, pedestal)  
29.32.L00.0D0 (DT, pedestal)



**80 mm diameter  
Flush mount  
with clips available**



Other variants on request.



### ATLAS LED Flexy

- Heavy duty applications
- IP 69K protection
- EMC levels, R10, CISPR25 Class 3 or 5

9 - 32V

212420 (rotative)  
212460 (flash)



### ATLAS LED 3 bolts

- Compact and robust
- OE approved beacon
- Latest LED generation

9 - 32V

212120 (rotative)  
212160 (flash)



### ATLAS LED Magnetic

- Rubber suction cup anti scratch
- 3,5 m spiral cable
- Age proved strong magnet

9 - 32V

212520 (rotative)  
212560 (flash)

## ECE R10 and R65 approved beacons

Multifunction : rotative, flash or double flash light patterns



### Pegasus LED Flexy

- Autoblok for easy installation
- Replaceable robust polycarbonate lens

10 - 30V

21.50.L75.308 (rotative)  
21.50.L75.508 (multifunction)



### Pegasus LED 3 bolts

- Permanent mounting
- Most compact beacon
- Rubber adapted gasket

10 - 30V

21.50.L35.308 (rotative)  
21.50.L35.508 (multifunction)



### Pegasus LED Magnetic

- Ideal for temporary use
- Rubber suction cup anti-scratch
- Aged proved strong magnet

10 - 30V

21.50.LV5.308 (rotative)  
21.50.LV5.508 (multifunction)



### Galaxy LED Flexy

- Design fits any vehicle
- Autoblok for easy and fast installation
- Rotating or flash

10 - 30V

21.49.L75.308 (rotative)  
21.49.L75.108 (flash)



### Venus LED Flexy

- Cost effective solution
- Anti-shock design shape

10 - 30V

21.43.L75.2V8 (flash)



### Saturnello HI Flexy

- Best seller agriculture H1 beacon
- Ultra-flexible rubber base
- Butterfly screw pole mounting

12V

21.88.001.000



### Ellipse H2I Flexy

- Low consumption H2I bulb - 21W (-60% consumption vs H1)
- Compact design

12V

21.44.H00.012



### Antares HI Pole mount

- Rotating beacon with H1 bulb
- Cost effective halogen solution
- Butterfly screw pole mounting

12V

21.84.T82.000

## ROHS compliant brackets - pole mounting :



21.90.000



21.91.000



21.92.000



21.93.000



21.97.000



21.97.005



21.99.000



Other fixations and colors on request.



### LC12 LED Rear lamp

- Most compact and thin multifunction
- Innovative dynamic indicator and integrated resistance
- Available for tractors or trailers

12V | 6 functions

P/N on demand



### CTU14 LED Rear lamp

- Compact ideal for tractors
- Position, stop and indicator
- Dynamic indicator

12 - 24V | 3 functions

163010 (left/right)



### LC5 Rear lamp

- Universal halogene lamp
- Anti vibration bulb system
- Horizontal and vertical mounting

12 - 24V | 6 or 7 functions

152180 (left/right)

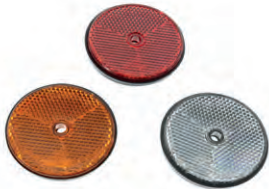


### 2704 Rear lamp

- Universal bulb lamp
- Compact design specific for agricultural trailers

12 - 24V | 3 or 4 functions

P/N on demand

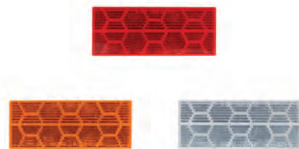


### Round reflector

- Red, amber and white
- Central fixation hole

Ø 61 mm

28.30.620.000 (red)  
28.30.610.000 (amber)  
28.30.600.000 (white)



### Rectangular reflector

- Red, amber and white
- Adhesive

110 x 44 mm

28.52.620.000 (red)  
28.52.610.000 (amber)  
28.52.600.000 (white)

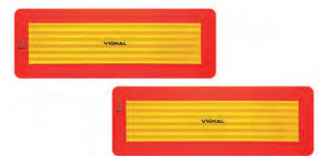


### Triangular reflector

- Trailer application

159 x 159 x 159 mm

28.00.000.000



### Reflective plates

- ECE R70 approved

2 x (195 x 565 mm)

28.97.000.000 - D14536 (Plastics)  
D14709 (Alu 1 mm)



### Reflective triangle

- Slow moving vehicle according to ECE R69

430 x 377 mm

28.80.000.000 - D14532



### RCL 1200 LED Ceiling light

- Powerful bright flood light
- Integrated only 5 mm width
- With 6 LEDs

1200 effective lm | 9 - 30V

300010 (cable)



### 2250 LED Ceiling light

- PIR detection
- Master slave function
- With 4 or 6 LEDs

500 - 750 raw lm | 10 - 30V

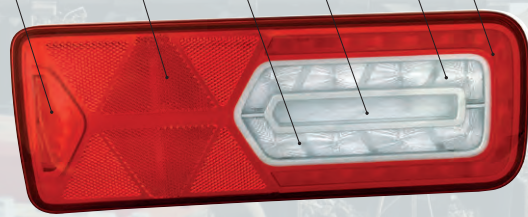
P/N on demand (cable)





### LCI2 LED Rear lamp

Dynamic Indicator    Fog    Reflector    Indicator    Reverse    Stop    Position



Integrated resistance (indicator failure control)





**Wireless rearview CCTV**

- LCD 7" multi-display monitor
- Records up to 4 cameras
- Quick mounting

12 - 24V  
**D14328 (1 screen + 1 camera)**



**Full HD rearview CCTV**

- 1080P HD image quality 10" monitor
- 4 cameras expandable
- Inox camera

12 - 24V  
**D14680 (1 screen + 1 camera + cable)**



Beep beep  
 Beep beep

**Alarm**

- Compact size
- Universal mounting brackets

12 - 24V  
**630120 (87 db)**  
**630100 (102 db)**

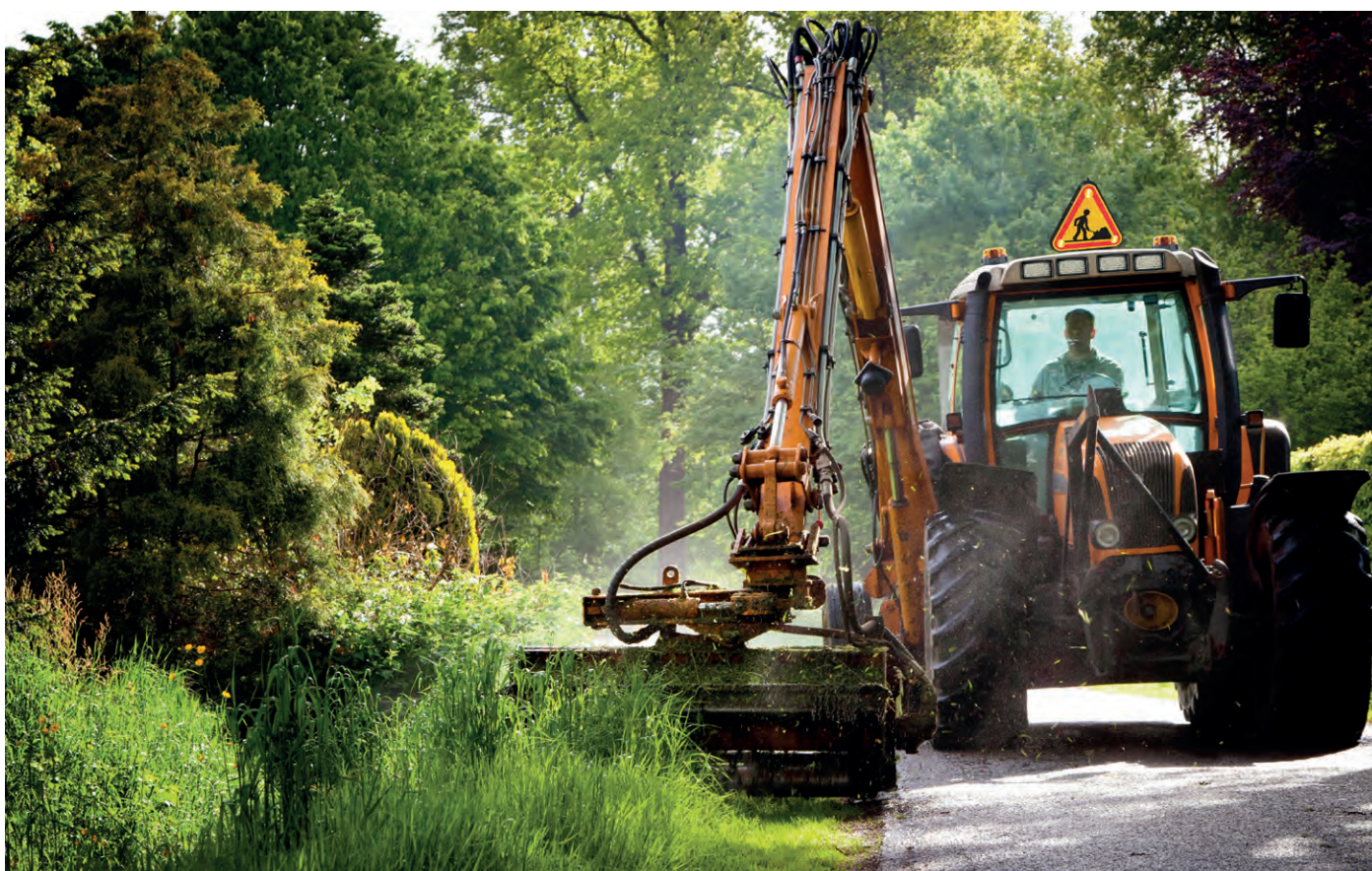


**Directional LED lamp**

- 10 flash patterns
- 6 high intensity LEDs
- Aluminum housing and PC lens

12 - 24V  
**D14190 (amber)**





## Triflash

- Shock proved plastic compound body
- Light weight 2,4 kg
- 3 led high intensity module IP 69K
- Manual foldable kit included
- Easy maintenance
- Different symbols available on demand
- Automatic sensor day/night
- Respect of all current approvals



### Triflash LED

- Light with thermo-resin carbon
- 3 LED flash
- High reflective film class 1 or 2

12 - 24V

20.90.L01.30V (class 1 - cable 3 m)  
 20.90.L01.60V (class 1 - cable 6 m)  
 20.90.L02.30V (class 2 - cable 3 m)  
 20.90.L02.60V (class 2 - cable 6 m)



### Triflash bar LED

- Complete bar with triflash and led beacons
- Transparent or amber lenses

12 - 24V

P/N on demand

# EXAMPLES OF AGRICULTURE SOLUTIONS



SLA 2000 LED  
p. 4



RHD 3000 LED  
p. 4



GALAXY LED  
p. 7



LC12 LED  
p. 8



Full HD rearview CCTV  
p. 10



CARBONLUX  
p. 6



QL 2000 LED  
p. 5



PEGASUS LED  
p. 7



SLOW VEHICLE  
p. 8



Wireless rearview CCTV  
p. 10



3800 LED  
p. 4



RC 850 LED  
p. 6



ATLAS LED  
p. 7



CTL14 LED  
p. 8



TRIFLASH  
p. 11



CARBONLUX  
p. 5



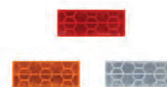
SHD 3000 LED  
p. 4



SATURNELLO  
p. 7



LC12 LED  
p. 8



REFLECTORS  
p. 8

## GLOBAL DESIGN FOR LOCAL PRODUCTION

