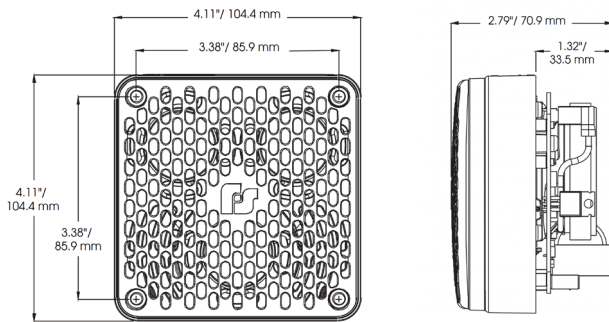


# Federal Signal 450E Vibratone Electronic Horn



450E-024



## Description

Model 450E electronic horn offers a loud, clear and distinctive tone. It's often used for general alarming, start and dismissal noticing, coded paging and process control in noisy areas. Its 4-wire terminal block and supervisory diodes design make it ideal for fire alarm applications.

Model 450E's polycarbonate housing and polymeric speaker are corrosion resistant and weatherproof for improved durability in harsh industrial environments. It has no detectable RF emissions in a 30 MHz to 1000 MHz frequency range, which minimises the potential for electrical device interference.

## Features and Benefits

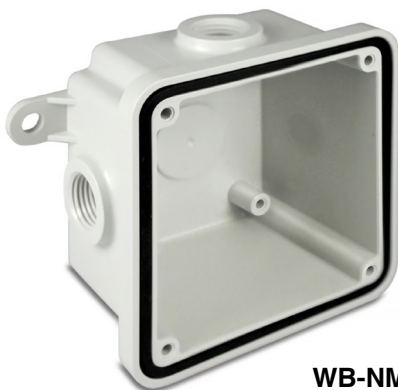
- Fire Regulated 16-33VDC General Purpose Signal 12-24VDC
- Coded or sustained tones
- No duty cycle or interval limitations
- 99 dBa @ 10' on axis (109 dBa @ 1m on axis)
- Four wire terminal block and supervisory diode
- Type 4X, IP66 when installed with Panel Mount Gasket (included) or optional Non-metallic Weatherproof Backbox (Model WB-NM)
- Marine Rated
- CSFM Approved
- UL and cUL
- UL Fire Listed and ULC Canadian Fire Listed

## Tech Specs

Voltage	12-24V DC, 16-33V DC
Operating Current	4.0A @ 24V DC
Decibel Output	109dBa @ 1m (99dBa @ 10')
Duty Cycle	No duty cycle or interval limitations
Operating Temperature	-65°F to 150°F (-54°C to 66°C)
Enclosure Rating	Type 4R enclosure
Certification	UL, cUL, UL Fire Listed, ULC Fire Listed, CSFM Approved, Marine Rated
Housing	Non-metallic Polycarbonate Light Gray (RAL 7035)
Body Colour	Gray
Mount	Surface mount
Dimension (D, W, H)	2.79x4.11x4.11" (70.9x104.4x104.4mm)
Weight	1 lb / 0.45 kg
Warranty	5 Year

## Optional Accessories

Molded thermoplastic neoprene-gasketed weatherproof housing for outside use, complete with mounting lugs; provided with (3) entrances for 1/2" conduit; 4-3/8" square box; 2-7/16" deep, offset mounting lugs on 5" centers; shipping weight 1 lb (0.45kg).



WB-NM

Part No.	Voltage	Operating Current	dBa @ 10' (UL 464)	dBa @ 1m (UL 464)	dBa @ 1m (on axis)	dBa @ 1m (on axis)
450E-024	Fire Regulated 16-33V DC	0.25A	89	99	98	108
	General Purpose Signal 24V DC	0.22A	N/A	N/A	99	109
	General Purpose Signal 12V DC	0.12A	N/A	N/A	94	104

Part No.	Description
WB-NM	Weatherproof back box, gray, non-metallic



Authorised Importer and Master Distributor

