

Vision X Pit Master

Xtreme Prime Red Kill Zone LED Light



Description

“If you’re in the red, you’re dead.”

Vision X Killzone systems use an elliptical pattern, and a red LED to paint a potential ‘Killzone’ path around the vehicle and indicates the radius of swinging an excavator. The dead zone system ensures that anyone working around a part of the equipment has a clear line of where you should not pass or stay. The red point on the ground indicates the driver’s dead zones and warns the them about their surroundings before it’s too late.

400W-500W Metal Halide Replacement Prime Drive for Enhanced Reliability & Output

Features and Benefits

- Integrated Electronic Thermal Management (ETM)
- Xtreme Five Watt LED is Driven to 90%Efficiency
- 360° Fully Adjustable Mounting System
- Reinforced Gasketed Bezel
- 90% Optically Pure
- Integrated Power Supply Mount (Power Supply Sold Separately)
- Integrated Deutsch Connector
- Die-Cast Aluminum Housing
- Polycarbonate Lens
- Patent Pending

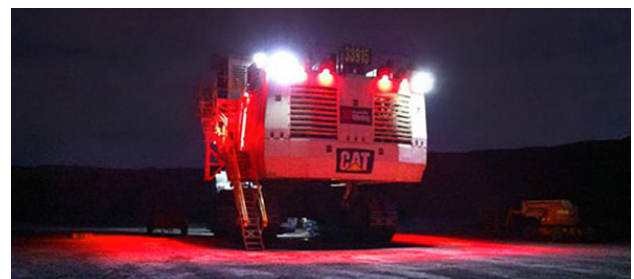
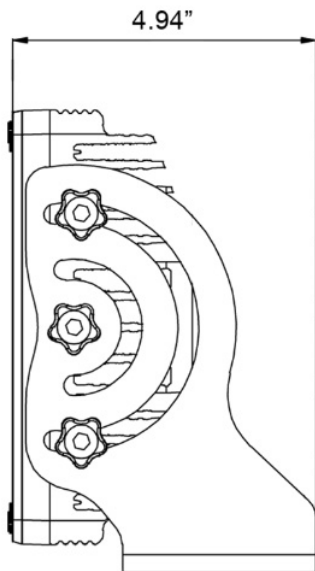
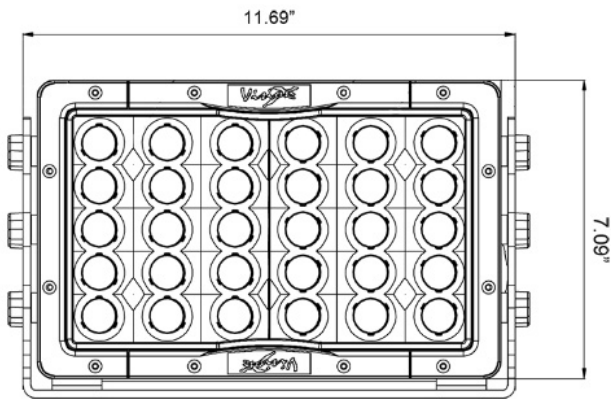
Applications

Mining and heavy industry

Tech Specs

Beam Patterns	Red (30°x65°)
rLumens	15,840 Lu
eLumens	11,100 Lu
Wattage	150W
Weight	12.34lbs/5.6kg
LED Lifespan	20,000 hours
Input Voltage	11-65V DC
	90-480V AC with Optional Inverter
Current Draw	12.5A @ 12V
IP Rating	IP68
Vibration Rating	15.6 Grms
Warranty	3 Years

Part No.	Description
PMX30E3065-RED	Vision X Pit Master Xtreme Prime Red Kill Zone LED Light: 30° or 65°, Red



Authorised Importer and Master Distributor

