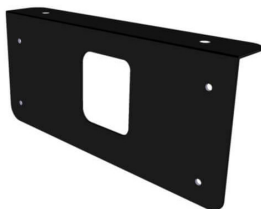


PREVIEW® WIRELESS WORKSIGHT



Pulsed Radar



Description

PreView® Wireless utilises Preco's patented, pulsed radar technology to detect objects in an operator's blind spot and reduce backing accidents. If something is detected, the operator receives an audible and visual active warning in the cab, giving them time to react and avoid an accident. By eliminating the need to install cables through the truck body, PreView Wireless reduces installation time by more than half, while still providing the best blind spot detection protection available. Made from rugged components designed to withstand the harsh environmental conditions found in many industries, from mines and construction sites to long-haul travel and ports.

Features and Benefits

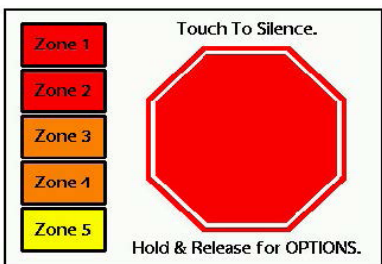
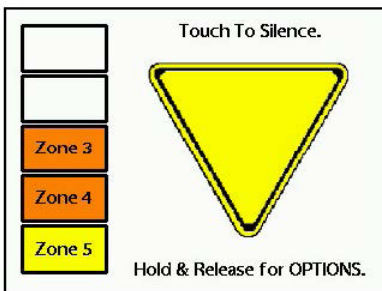
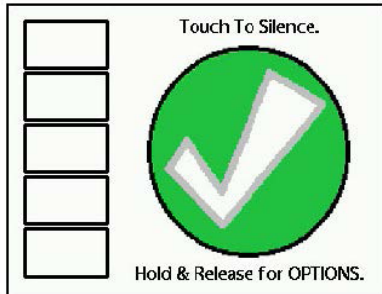
- Secure dedicated wireless network connection
- Detection range up to 6m (20ft) with the ability to set detection zone as low as 3m (10ft). Offers ability to customise the visual and audible alert at different distances.
- Detection range customised through the in-cab display
- Provides one touch audible alert acknowledgement
- Warning alerts automatically change as the threat of accident increases
- Intuitive graphics for each detection zone utilises standard warning protocols: Stop sign, Yield sign and Green light
- Less than 0.25A current draw
- Connects to reverse lights for power
- Ability to customise detection zone onsite with PrecoNet Service Tool
- Built to meet rugged SAE J1455 Specs

Applications

Heavy equipment, mining, agriculture, oil & gas, construction, long-haul, trucks, material handling, port & marine, military, utility vehicles

Tech Specs

Detection Ranges	User adjustable from 3 - 6m (10 - 20ft)
Warning Ranges	User adjustable
Transmitter	Pulsed RF transmitter at 5.8GHz operating under FCC Part 15.249
Voltage	9-33V DC
Electronics	Solid state
Current Draw	0.2 amp maximum, inrush current limited to 1A
Vibration	25G RMS all three axes
Shock	25G all three axes
IP Rating	IP67 (encapsulated to protect from dust and moisture)
Operating Temperature	-40°C to +85°C
Wireless	ZigBee 2.4GHz, IEEE 802.15.4 compliant DSSS baseband
Compliance	Compliant with FCC part 15.247, FCC ID: OXZWD7102
Data Update Rate	125 ms
Polarity	Negative ground, polarity protected to 150V
Transient Spike Protection	Over voltage protected to 150V
Housing (sensor)	Polycarbonate radome
Sensor Mount	Four 0.25" (6.4mm) diameter holes on 8.54" horizontal centers and 2.00" vertical centers. Unit is supplied with #10 SS screws for mounting purposes.
Display Mount	User dependent, 1/4-20 thread
Sensor Connection	Deutsch DT06-08SA-E008
Display Connection	Three 26 AWG wires, connect to ignition and/or reverse lamp circuit
Display Aux Output	Single 26 AWG wire, +33V tolerant Active State: switched to ground, over current protected to 125mA sink maximum. Inactive State: high impedance
Sensor Weight	2.3 lb (1.04 kg)
Sensor Dimensions (DxWxH)	1.4x10.5x4.4" (36x267x112mm)
Display Weight	0.27 lb (0.12 kg)
Display Dimensions (DxWxH)	1.34x3.6x3.36" (34x84x85mm)



Authorised Importer and Master Distributor

