

# Colehersee 24505

## Accessories for Disconnect Switches Series



### Description

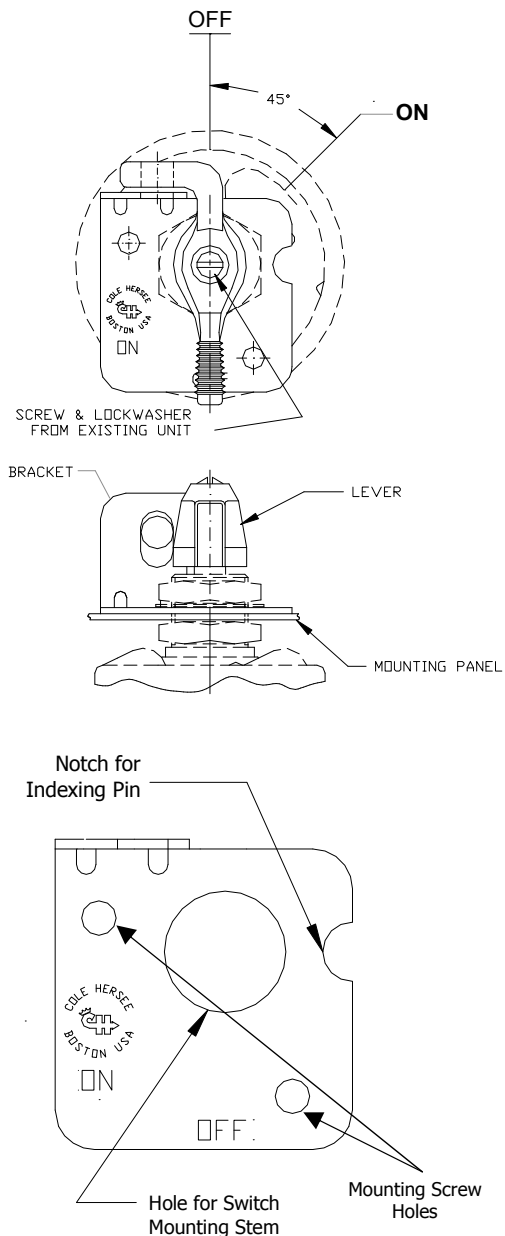
24505 Lockout Lever Kit, suitable for use with Cole Hersee brand lever actuated metal case master disconnect switches with a 3/4" diameter (19.1mm) mounting stem.

Use this kit to secure the switch in the Off position with a padlock. Such lockout procedures may be required by regulations, particularly in situations where moving machinery might be accidentally turned on causing risk of injury.

### Tech Specs

Details	Lever and Flange Plate for Padlock use metal case master disconnect switches
Type	Lockout lever kit
Mounting Stem	3/4in dia 19.1mm dia

Part No.	Description
COL-24505	Lever and Flange Plate for Padlock use metal case master disconnect switches



Authorised Importer and Master Distributor

